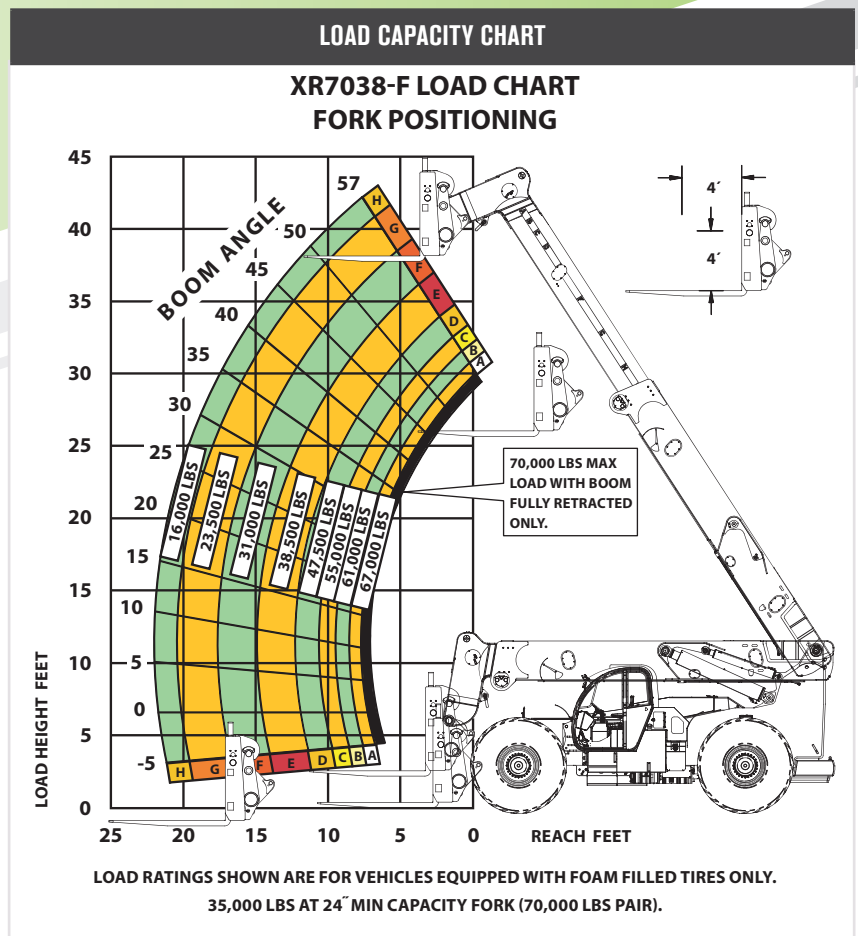


| SPECIFICATIONS | | |
|--------------------------|----------------------|----------|
| Lift capacity | 70,000 lbs | 31,751kg |
| Max lift height | 38' 2" | 11.63m |
| Forward reach | 22' | 6.70m |
| Frame leveling L/R | 7° | |
| Weight* | 115,000 lbs | 52,163kg |
| Engine (Cummins 9L) | 300 hp (Tier 4F) | |
| Axles | Kessler 101.2228.3 | |
| Transmission | Dana T36000 | |
| Fuel capacity | 150 gal | 567.8L |
| Tires | foam filled 29.5 R25 | |
| Hydraulic flow (per min) | 92 gal | 348.2L |
| Hydraulic pressure | 4,200 psi | 289.5bar |
| Hydraulic oil capacity | 140 gal | 529.9L |
| Length to fork face | 27' 9" | 8.45m |
| Width | 135" | 3.42m |
| Height | 11' 7" | 3.53m |
| Wheelbase | 188" | 4.77m |
| Ground clearance | 20.5" | 520.7mm |
| Turning radius | 24' 6" | 7.46m |

*Weight based on closed cab model with AC and foam filled tires.



STANDARD FEATURES

| | |
|-----------------------------------|---|
| 360° operator visibility | Rear back up camera |
| Suspension seat | Ductile steel manifold |
| Easy service access | Easy cab mounted grab handles |
| Protected tilt & extend cylinders | Master disconnect switch |
| Steel hydraulic & fuel tanks | Boom lift point |
| Long life Lexan labels | Manual lowering valve (cylinders) |
| Suspended pedals | Large cross section boom |
| Large capacity fuel tank | Easy tie downs |
| Trunnion mounted sway cylinders | Heavy duty pre-cleaner |
| Melonite pins | Additional high pressure hydraulic filter |
| Standard auxiliary hydraulics | Multi-function display screen |
| Steel dash | Long life boom rollers |
| Center mounted powertrain | Solid steel plate chassis |
| Dual batteries | Rear axle stabilization (RAS) |
| Cab step | Back up alarm with light |
| Front camera on carriage | Xtreme OnSite™ telematics |