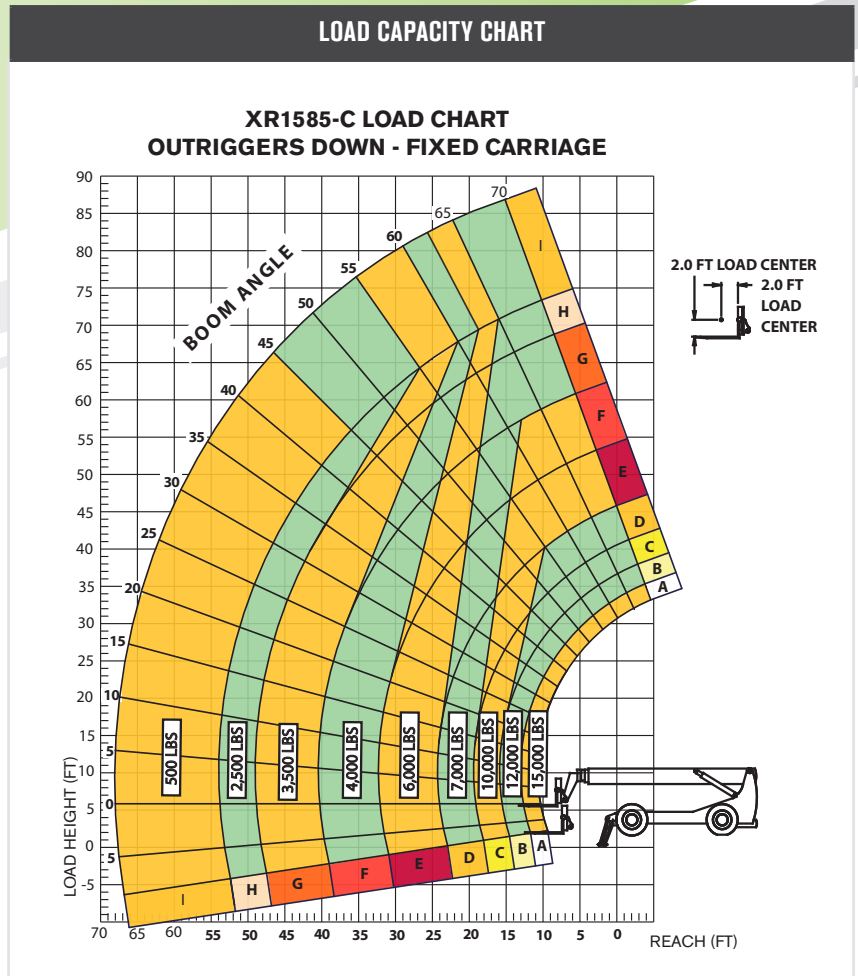


SPECIFICATIONS		
Lift capacity	15,000 lbs	5,443kg
Max lift height	85'	25.9m
Forward reach	67'	20.4m
Frame leveling L/R	8°	
Weight*	65,500 lbs	29,710kg
Engine (Cummins 4.5L)	173 hp (Tier 4F)	
Axles	Kessler 82.8416.3	
Transmission	Dana T14	
Fuel capacity	100 gal	378.5L
Tires	foam filled 16.00x25-28	
Hydraulic flow (per min)	49 gal	185.4L
Hydraulic pressure	4,000 psi	275.7bar
Hydraulic oil capacity	70 gal	
Length to fork face	28' 8"	8.7m
Width	102"	3.1m
Height	10' 1"	3.8m
Wheelbase	151"	3.7m
Ground clearance	15"	381mm
Turning radius	16' 8"	5.1m

\* Preliminary weight based on open cab model with foam filled tires.



### STANDARD FEATURES

360° operator visibility	Ductile steel manifold
Suspension seat	Easy cab mounted grab handles
Easy service access	Master disconnect switch
Protected tilt & extend cylinders	Boom lift point
Steel hydraulic & fuel tanks	Manual lowering valve (cylinders)
Long life Lexan labels	Large cross section boom
Heavy duty boom chains	Easy tie downs
Suspended pedals	"Y" frame handle
Large capacity fuel tank	Heavy duty pre-cleaner
Trunnion mounted sway cylinders	Additional high pressure hydraulic filter
Melonite pins	Steel hood
Standard auxiliary hydraulics	Solid steel plate chassis
Steel dash	Rear axle stabilization (RAS)
Center mounted powertrain	Wider outrigger stance
Long life boom rollers	Back up alarm with light
Dual batteries	Cab step
Electrical aux hydraulic control	