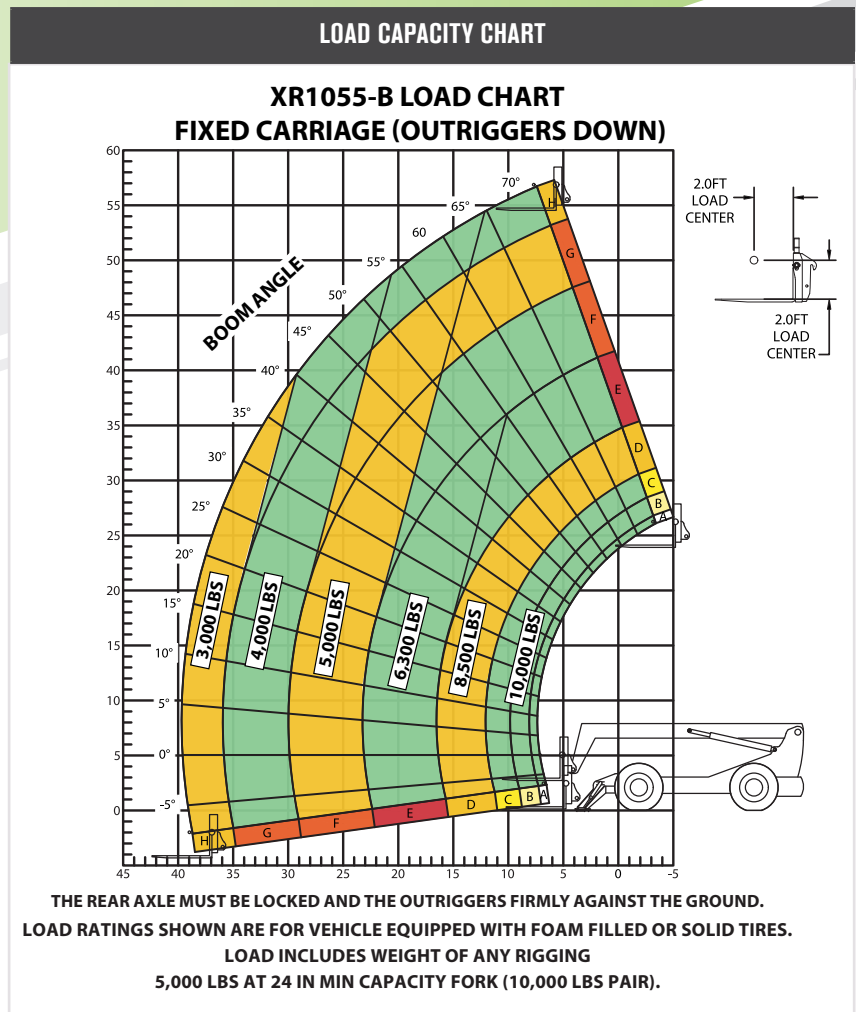


SPECIFICATIONS		
Lift capacity	10,000 lbs	4,536kg
Max lift height	55'	16.76m
Forward reach	39'	11.9m
Frame leveling L/R	11°	
Weight*	34,600 lbs	15,694kg
Engine (Cummins 3.8L)	74 hp HT (Tier 4F)	
Axles	ZF MST3055 / 3060	
Transmission	ZF 3WG94	
Fuel capacity	50 gal	189.2L
Tires	foam filled 15.5 x 25	
Hydraulic flow (per min)	49 gal	185.4L
Hydraulic pressure	3,500 psi	241.3bar
Hydraulic oil capacity	62 gal	234.7L
Length to fork face	21' 4"	6.5m
Width	101"	2.56m
Height	8' 9"	2.66m
Wheelbase	125"	3.17m
Ground clearance	16.5"	419mm
Turning radius	12'	3.65m

*Weight based on open cab model with foam filled tires.



STANDARD FEATURES

360° operator visibility	Ductile steel manifold
Suspension seat	Easy cab mounted grab handles
Easy service access	Master disconnect switch
Protected tilt & extend cylinders	Boom lift point
Steel hydraulic & fuel tanks	Manual lowering valve (cylinders)
Long life Lexan labels	Large cross section boom
Heavy duty boom chains	Easy tie downs
Suspended pedals	Heavy duty pre-cleaner
Large capacity fuel tank	Additional high pressure hydraulic filter
Trunnion mounted sway cylinders	Steel hood
Melonite pins	Solid steel plate chassis
Standard auxiliary hydraulics	Rear axle stabilization (RAS)
Steel dash	Wider outrigger stance
Center mounted powertrain	Back up alarm with light
Long life boom rollers	Limited slip front axle
Dual batteries	Cab step
Electrical aux hydraulic control	Engine block heater