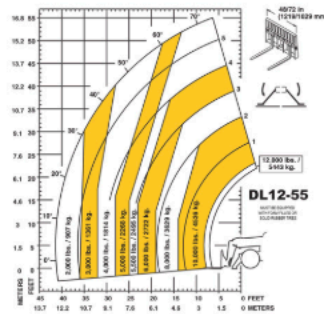


## Capacities

Lift Capacity	12,000 lbs.
Maximum Lift Height	55'5"
Capacity at Maximum Lift Height	5,500 lbs.
Maximum Forward Reach	40'9"
Capacity at Maximum Forward Reach	2,000 lbs.
Maximum Reach Below Grade	2'10"

## Load Chart

<b>A</b>	10,000 lbs.
<b>B</b>	8,000 lbs.
<b>C</b>	6,000 lbs.
<b>D</b>	5,000 lbs.
<b>E</b>	4,000 lbs.
<b>F</b>	3,000 lbs.
<b>G</b>	2,000 lbs.



## Engine

Manufacturer	Cummins
Model	3.8L QSF Tier IV
Power	120 hp
Aspiration	Turbocharged
Rated Speed	2,400 rpm

## Components

Transmission	Dana 4-Speed Power Shift
Maximum Travel Speed	22.8 mph
Selective Steering	4-Wheel 2-Wheel Crab
Brakes	Oil-Immersed, Disc-type
Parking Brake	Spring-Applied, Hydraulic Release

## Hydraulics

Pump Type	Dual Gear
Total Capacity	19/24 gpm
Main Relief Pressure	3,000 psi
Auxiliary Relief Pressure	2,500 psi
Hydraulic Reservoir Capacity	62.5 gal.

## General Specifications

Approximate Weight	27,500 lbs.
Length - Less Forks	20'10"
Width	8'3"
Ground Clearance	16"
Wheelbase	10'8"
Turning Radius	12'2"
Overall Height	8'6"
Frame Leveling - Left/Right	10°/10°
Fuel Capacity	30 gal.
Recommended Tire Type	14.00 x 24 G2 16-ply